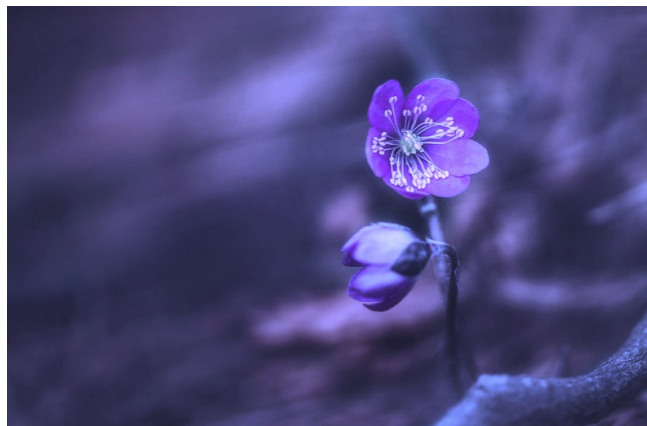


Ella Wilkinson

---

# Fire-Flowers



SATB & Piano

---

Poem by  
Emily Pauline Johnson

# Fire-Flowers

Emily Pauline Johnson

Ella Wilkinson

$\text{♩} = 65$  **rall.** **a tempo**

SOPRANO

ALTO

TENOR

BASS

$\text{♩} = 65$   
*flowing, freely* **rall.** **a tempo**

Piano *mp*  
*with pedal*

8 **Andante** ( $\text{♩} = 75$ ) **rall.** **a tempo** **rall.** **a tempo**  
*p*  
And  
*p*  
And  
*p*  
And  
*p*

**Andante** ( $\text{♩} = 75$ ) **rall.** **a tempo** **rall.** **a tempo**  
*mf*  
And  
*p*

13

on - ly where the for - est fires have sped, scorch - ing re - lent-less-ly the

on - ly where the for - est fires have sped, scorch - ing re - lent-less-ly the

on - ly where the for - est fires have sped, scorch - ing re - lent-less-ly the

on - ly where the for - est fires have sped, scorch - ing re - lent-less-ly the

20

cool north lands, a sweet wild flow-er lifts its pur - ple

cool north lands, a sweet lifts its pur - ple

cool north lands, a sweet lifts its pur - ple

cool north lands, a sweet wild flow-er lifts its pur - ple

26

head, and like some gen-tle spir - it sor - row fed, it

head, like some spir - it sor - row fed, it

head, and like some spir - it sor - row fed, it

and like some gen-tle spir - it sor - row fed, it

32

hides its scars with al - most hu - man hands, hu - man hands.

hides its scars with al - most hu - man hands, hu - man hands.

hides its scars with al - most hu - man hands, hu - man hands.

hides its scars with al - most hu - man hands, hu - man hands.

39

*mp* And on - ly to the  
*mp* And on - ly to the  
*mp* And on - ly to the  
*mp* And on - ly to the

44

*mf* heart that knows of grief, *mp* of des - o - lat - ing fi - re, *mf* of  
*mf* heart that knows of grief, *mp* of des - o - lat - ing fire, *mf* of  
*mf* heart that knows of grief, *mp* of des - o - lat - ing fire, *mf* of  
*mf* heart that knows of grief, *mp* of des - o - lat - ing fire, *mf* of

50 *mp* *a tempo* *mf* *mp*

hu - man pain, there comes some pu - ri - fy - ing sweet be - lief

hu - man pain, there comes some pu - ri - fy - ing sweet be - lief

hu - man pain, there comes some pu - ri - fy - ing sweet be - lief sweet be - lief

hu - man pain, there comes some pu - ri - fy - ing sweet be - lief sweet be - lief

*rit.* *a tempo*

*mf* *mf* *mf*

*rit.* *a tempo*

56 *f* *mf* *a tempo*

sweet be - lief,

sweet be - lief,

sweet be - lief,

sweet be - lief,

sweet be - lief,

*rit.* *a tempo*

*f* *mf* *a tempo*

*rit.* *a tempo*

61

a tempo  
*mp*

rall. .

some fel - low feel-ing beau - ti - ful, if

some fel - low feel-ing beau - ti - ful, if

some fel - low feel-ing beau - ti - ful, if

some fel - low feel-ing beau - ti - ful, if

*freely*

*mp*

a tempo

rall. .

65

a tempo

rit..

a tempo

brief.

brief.

brief.

brief.

*f*

*f*

*f*

*f*

a tempo

rit..

a tempo

*f*

*mf*

and life re - vives, and  
 and life re - vives, and  
 and life re - vives, and  
 and life re - vives, and

*p* *p* *p* *p*

*p* *mp*

75 *mf* *p* *mf* *molto rit.* *pp*  
 blossoms once a - gain. mm  
*mf* *p* *mf* *p* *pp*  
 blossoms once a - gain. mm  
*mf* *p* *mf* *p* *pp*  
 blossoms once a - gain. mm  
*mf* *p* *mf* *p* *pp*  
 blossoms once a - gain. mm *8va* *molto rit.*