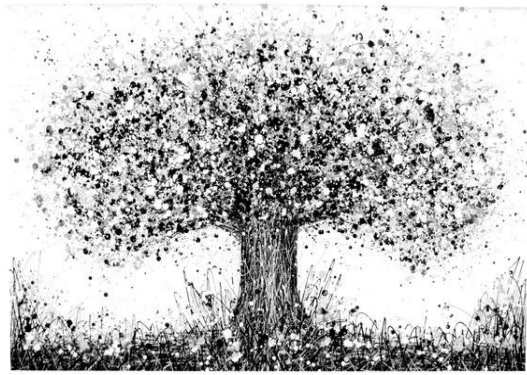


Elizabeth Wilkinson



# The Oak

SATB

*Poem by Alfred Lord Tennyson*

# The Oak

Alfred Lord Tennyson

Elizabeth Wilkinson

$\text{♩} = 85$

Warmly, with rubato

poco acc.

SOPRANO

ALTO

TENOR

BASS

*p* *mf* *mp*

Live thy life young and old

8

*p* *mf* *mp* *moving forward*

like yon oak bright in spring bright spring

like yon oak bright in spring bright in spring

like yon oak bright in spring bright in spring

like yon oak bright in spring bright

*poco rall.* **tempo primo**

13

li - ving gold gold

liv - ing gold liv-ing gold liv - ing gold

liv - ving gold liv - ing gold gold

liv - ing gold liv - ing gold

17

*p* *mp* *mf*

Sum - mer sum - mer rich sum - mer rich then

*mp* *mf*

Sum - mer sum - mer sum - mer rich then and

*mp* *mf*

Sum - mer sum - mer rich then and

*mf*

sum - mer sum - mer rich

23

*mf* *f*

and then aut - umn changed aut - umn changed

*mf* *f*

then aut - umn changed aut - umn changed sob - er - er

*mf* *f*

then and aut - umn changed aut - umn changed

*f*

then aut - umn changed aut - umn changed sob - er - er

29

*mf* *f* *rall.*

aut - umn sob - ber - er hued gold a - gain

*f* *mf*

hued hued gold a - gain

*f* *mf*

sob - er - er hued hued gold a - gain

*f*

hued sob - er - er hued gold a - gain

35 **tempo primo**

*p* *mf* **poco rit.**

All his leaves fall - 'n at length

All his leaves leaves fall 'n at length

*mp* *mf*

All his leaves fall'n fall - 'n at length

*mf*

fall'n fall - 'n at length

42 **largo** **poco rall.** **a tempo** **molto rit.**

*p* *mp*

look he stands trunk and bough na - ked

look he stands trunk and bough na - ked

*p* *mp*

look he stands trunk and bough na - ked

*p* *mp*

look he stands trunk and bough na - ked

47 *ff*

strength

*ff*

strength

strength

strength

The image shows a musical score for four staves. The first staff is in treble clef with a key signature of one sharp (F#) and a dynamic marking of *ff*. The second staff is in bass clef with a key signature of one sharp (F#) and a dynamic marking of *ff*. The third staff is in treble clef with a dynamic marking of *ff*. The fourth staff is in bass clef with a dynamic marking of *ff*. Each staff has a large, horizontal, oval-shaped graphic element that spans across the staff, resembling a bow or a stylized letter 'O'. Below each staff, the word 'strength' is written, followed by a horizontal line. The page number '47' is located at the top left of the first staff, and the dynamic marking *ff* is placed above the first staff.

PREVIEW